

Charcoal Shipments (Tons)

1993-2008

Year	Regular Briquets	Instant Light	Total Briquets	Lump Charcoal
1993	703,708	105,232	808,940	17,577
1994	722,966	117,161	840,127	19,217
1995	700,221	123,491	823,712	18,850
1996	734,850	134,550	869,400	31,088
1997	731,011	152,737	883,748	37,854
1998	718,596	179,349	897,945	42,247
1999	707,571	204,632	912,203	47,657
2000	690,798	248,969	939,767	80,000
2001	670,000	250,000	920,000	83,000
2002	700,000	266,500	966,500	91,000
2003	709,200	277,750	986,950	95,730
2004	675,000	252,000	927,000	98,500
2005	680,000	257,000	937,000	99,200
2006	640,800	253,250	894,050	100,000
2007	640,000	244,000	884,000	110,100
2008	661,500	236,000	897,500	113,000

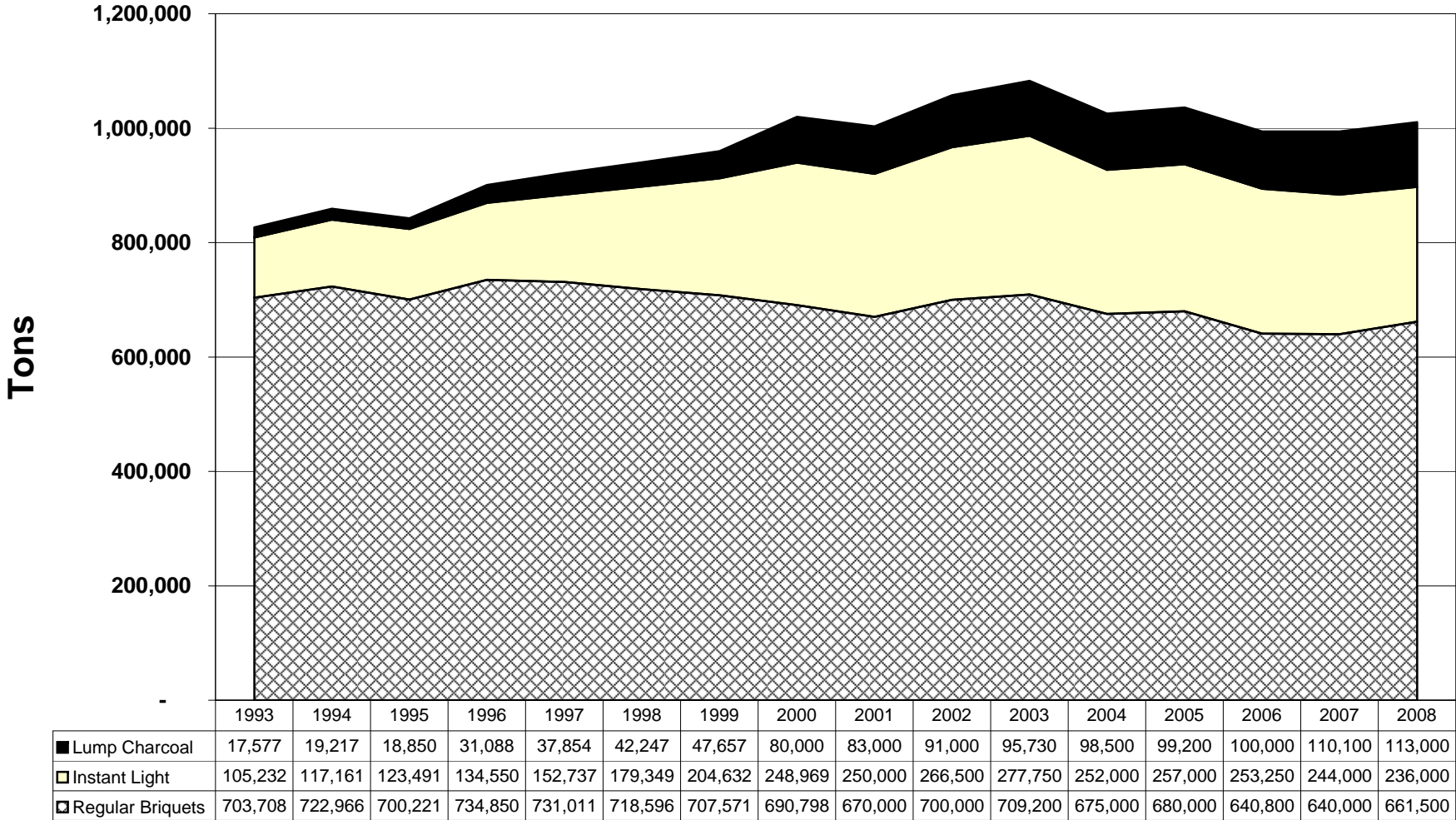
Average Retail Prices for Charcoal Products

2000-2008

Year	Regular Briquets (20 lbs)	Instant Light (20 lbs)	Lump (10 lbs)
2000	\$ 6.23	\$ 10.99	\$ 5.00
2001	\$ 6.93	\$ 11.22	\$ 5.00
2002	\$ 7.14	\$ 11.32	\$ 5.42
2003	\$ 7.30	\$ 11.35	\$ 5.44
2004	\$ 6.62	\$ 10.99	\$ 5.48
2005	\$ 6.50	\$ 12.00	\$ 5.50
2006	\$ 6.80	\$ 13.23	\$ 5.75
2007	\$ 7.00	\$ 14.25	\$ 5.80
2008	\$ 7.40	\$ 14.85	\$ 6.00

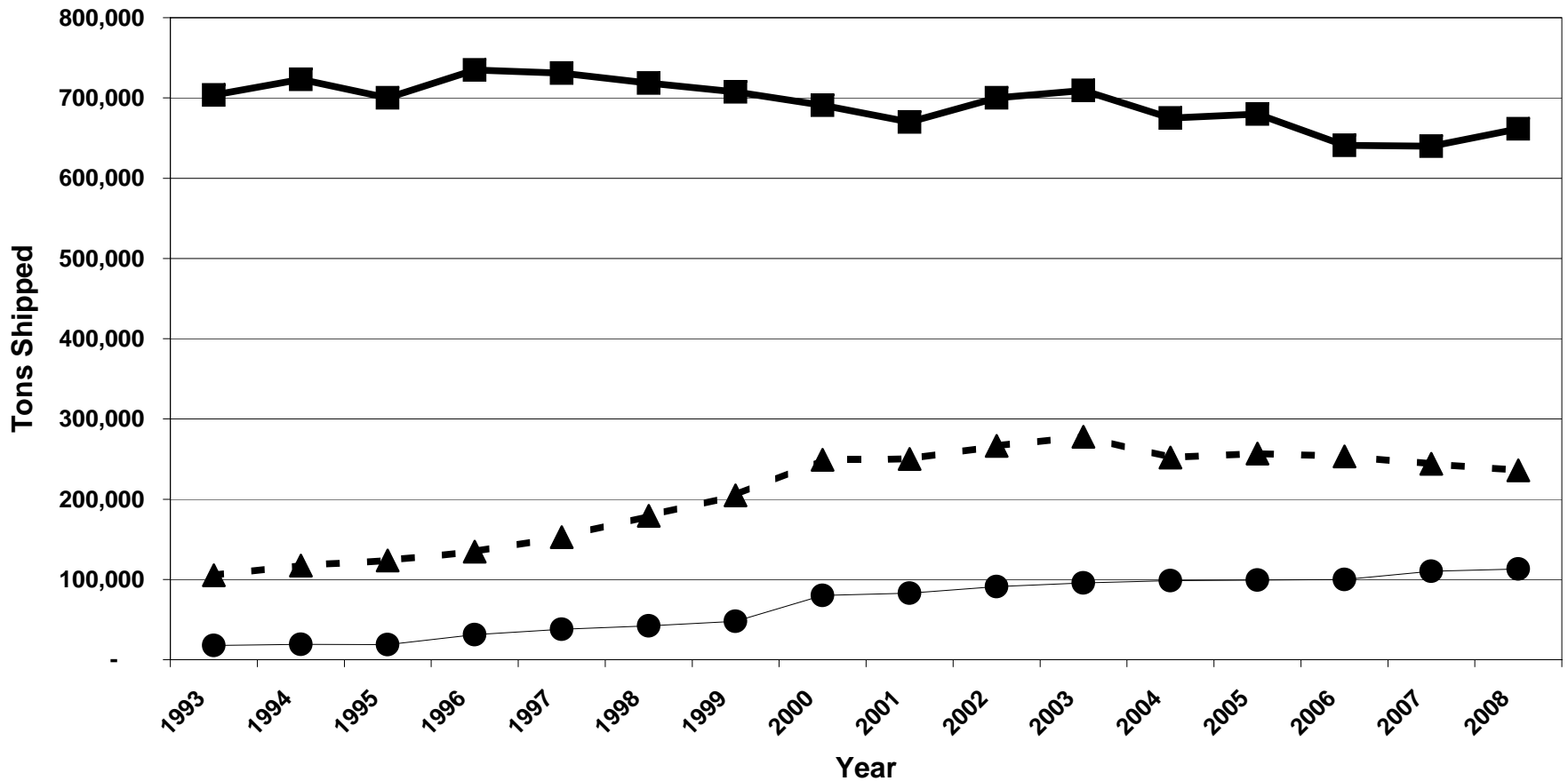
Charcoal Shipments (Tons)

1993--2008



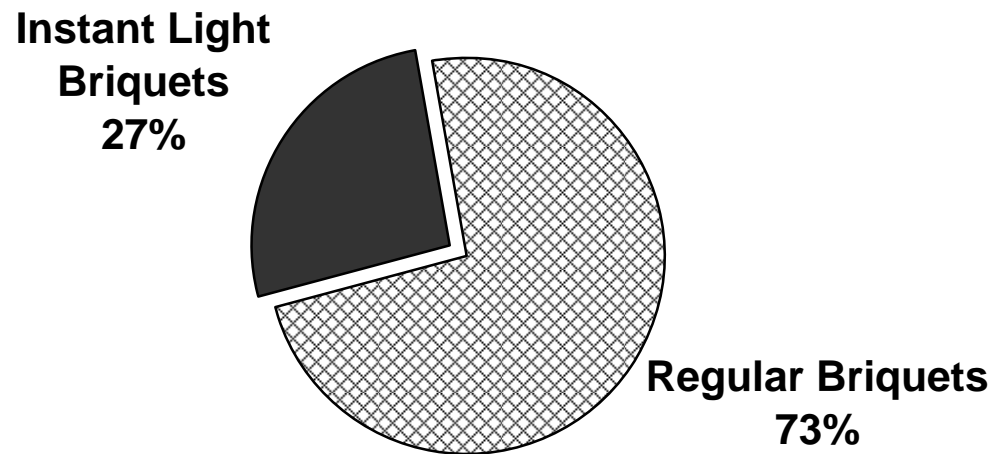
Charcoal Shipments

1993--2008



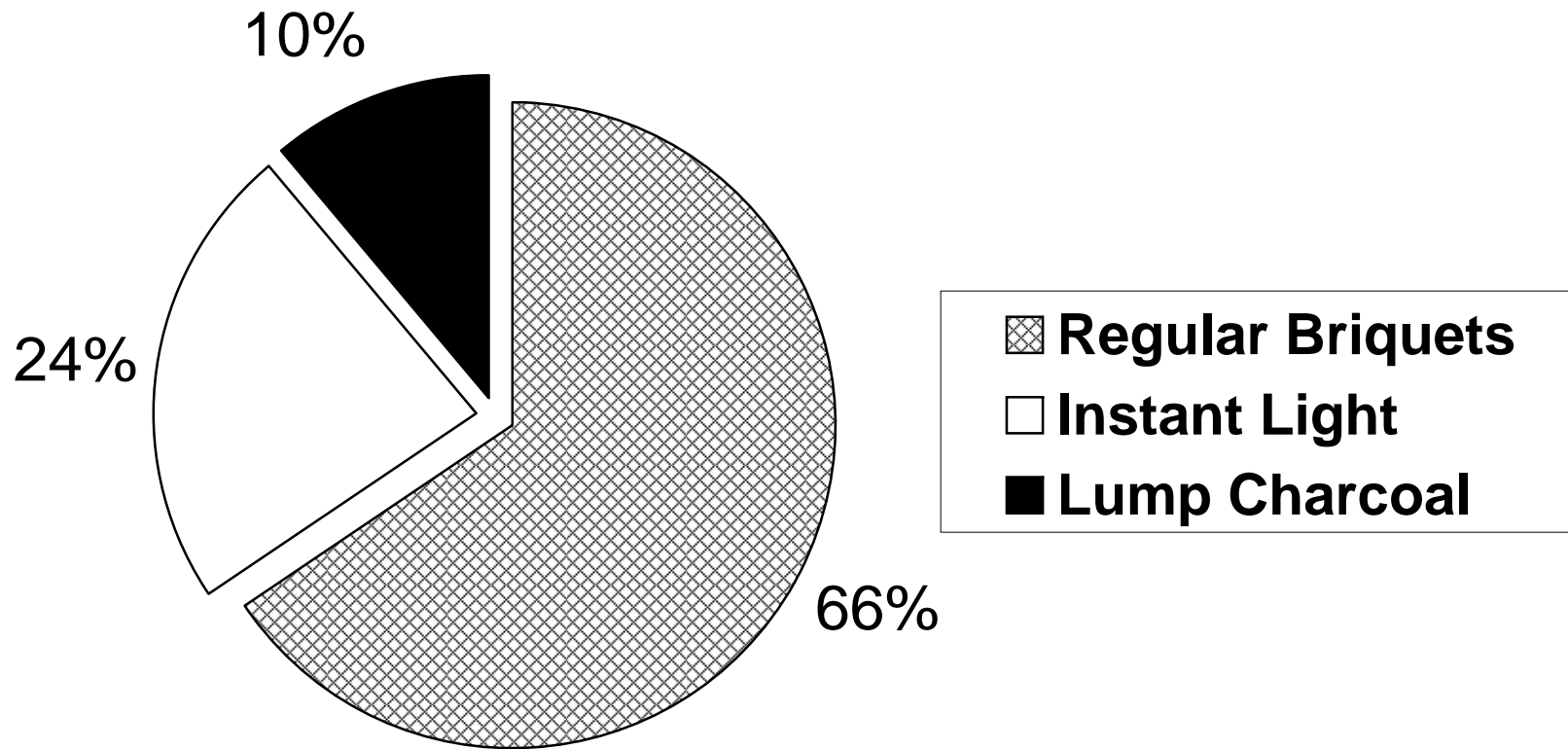
■ Regular Briquets - ▲ Instant Light ● Lump Charcoal

Charcoal Briquet Shipments 2008



Total Briquet Shipments -- 897,500 Tons

Total Tons of Charcoal Shipped 2008



Total Tons Shipped -- 1,010,500